

SUPERIAL 800 i+

A door system designed for doors with high thermal insulation parameters.

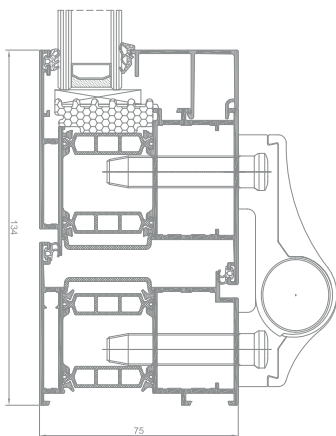
The possibility of using double or triple glazing

Thermal insulation under the glass which improves the thermal insulation of the section

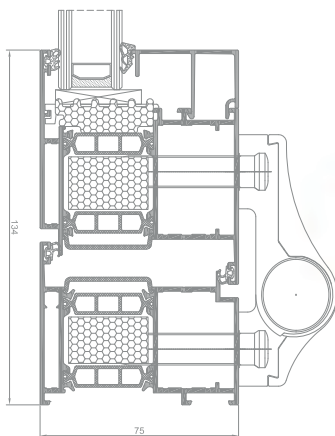
Thermal insulation which improves the thermal insulation of the section

A selection of painting options, between RAL palette (Qualicoat 1518), wood patterns Aliplast Wood Colour Effect (Qualideco PL-0001), anodized finish, also in bi-colour

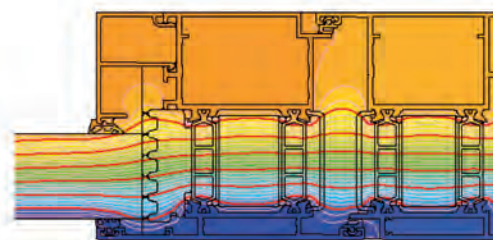
SP 800 i+



SP 800 i door section



SP 800 i+ door section



distribution of isotherms for frame with sash composition in door system SP 800 i+ (SP 814 + SP 825)

SUPERIAL 800 i+

SUPERIAL 800 i+

- | A door system designed for doors with high thermal insulation parameters.
- | The system is compatible with system the Superial system - thanks to adaptive profiles designs in series SP 800 can be integrated with Superial shop windows.
- | The system features very good anti-burglary properties (the lock is situated far from the outer side).
- | A thermal insulation threshold is used, which can be disassembled following door installation in the frame.
- | The option of bending profiles (detailed specification of profiles and detailed technical parameters of a profile bending process are available in the customer area of the website www.aliplast.pl).
- | The system SP 800 is also available in the variant with improved thermal insulation power (SP 800 i, SP 800 i+), which was achieved by applying special thermal inserts slid between thermal separators and around the glass panel. Such a solution improves the insulating power of the profile by 0,2 - 0,5 W/m²K.
- | A wide range of colours available - RAL palette, structural colours, Aliplast Wood Colour Effect, bi-colour.

TECHNICAL SPECIFICATION

SYSTEM	MATERIAL	DEPTH OF FRAME	DEPTH OF LEAF	GLAZING RANGE	TYPE OF WINDOWS	TYPE OF DOORS
SP 800	aluminium / polyamide	75 mm	75 mm	14-61 mm	—————	single and double doors, outside opening, inside opening, panic doors
SP 800 i+	aluminium / polyamide	75 mm	75 mm	14-61 mm	—————	single and double doors, outside opening, inside opening, panic doors

PERFORMANCE

SYSTEM	THERMAL INSULATION U _f *	AIR PERMEABILITY	WINDLOAD RESISTANCE	WATERTIGHTNESS
SP 800	U _f from 1,48 W/m ² K	Class 4; EN 12207	2400 Pa; EN 12210	Class 8A; EN 12208
SP 800 i+	U _f from 1,08 W/m ² K	Class 4; EN 12207	2400 Pa; EN 12210	Class 8A; EN 12208

* Thermal insulation is dependent on a combination of profiles and thickness of the filling.