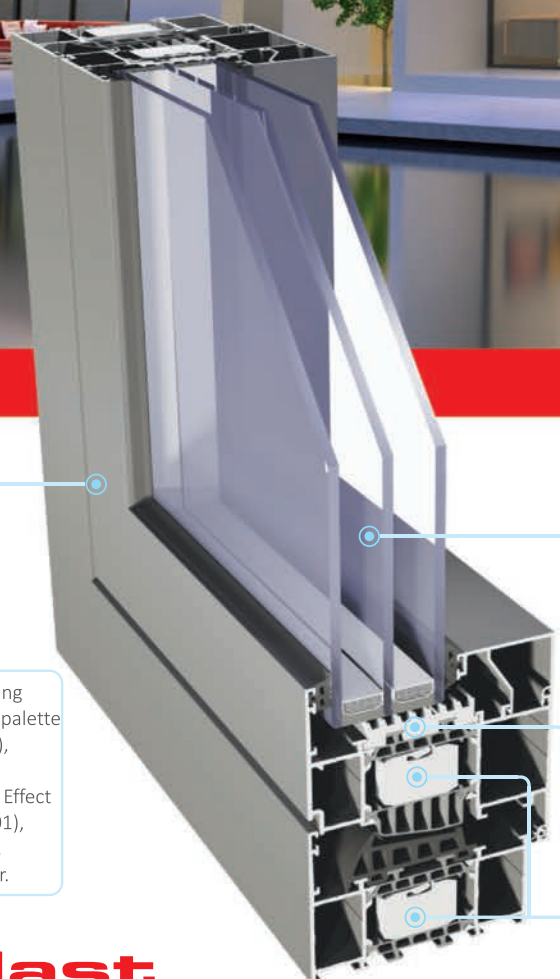




**STAR**



Selection of painting options, between RAL palette (Qualicoat 1518), wood patterns Aliplast Wood Colour Effect (Qualideco PL-0001), anodized finish, also in bi - colour.

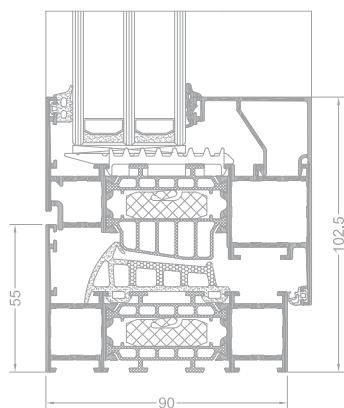
Modern aluminium system for designing windows and doors requiring very good thermal insulation.

The possibility of using double or triple glazing

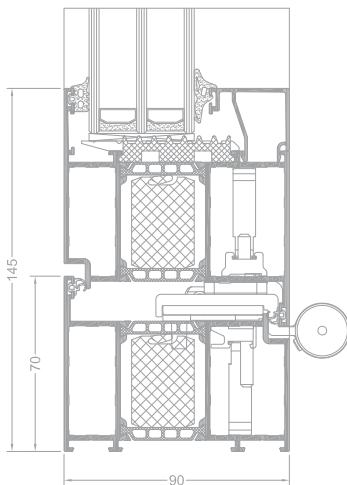
Thermal insulation under the glass which improves the thermal insulation of the section

Thermal insulation which improves the thermal insulation of the section

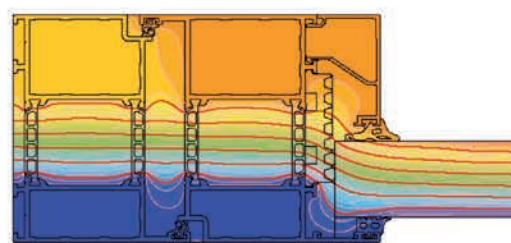
GT



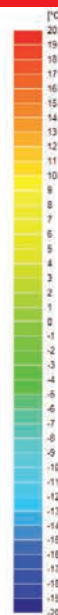
STAR window section



STAR door section



distribution of isotherms in STAR (GT415 + GT424)



## STAR

## STAR

- | A modern aluminium system for designing windows and doors requiring very good thermal insulation.
- | Thermal separator 45 mm deep, made of solid and proven materials, is an effective thermal barrier.
- | The same type of insulation insert in the window sash and in the window frame provides continued protection against heat losses of the whole structure.
- | New standard of profile and glass pane interface - increased depth improves thermal properties and structure of the system.
- | New type of corner section used preventing collision between the screw and the corner when screwing in surface hardware elements under the PVC groove.
- | The possibility of adding roller hinge system hardware with very high load bearing capacity.
- | Innovative drainage system (no visible elements stopping drainage outlets).
- | The same type of corner and T connector in the external and internal cavity (reduced number of accessories, faster fabrication).
- | Reduced number of glazing strips and gaskets, while keeping the continuity of glazing depending on package thickness.
- | Option of bending profiles (detailed specification of profiles and detailed technical parameters of profile bending process are available in the customer area of the website [www.aliplast.pl](http://www.aliplast.pl)).
- | Modern design.
- | The system is particularly recommended for low energy consumption and thermal insulation retrofitted buildings, and they also improve thermal comfort in standard objects.
- | A wide range of colours available - RAL palette, structural colours, Aliplast Wood Colour Effect, bi-colour.

## TECHNICAL SPECIFICATION

SYSTEM	MATERIAL	DEPTH OF FRAME	DEPTH OF LEAF	GLAZING RANGE	TYPE OF WINDOWS	TYPE OF DOORS
GT window	aluminium / thermal insulation	90 mm	99 mm	fix 14-72 mm ru 23-81 mm	walls, fix, tils and turn	_____
GT door	aluminium / thermal insulation	90 mm	99 mm	14-72 mm	_____	single and double doors, outside opening, inside opening

## PERFORMANCE

SYSTEM	THERMAL INSULATION $U_f$ *	AIR PERMEABILITY	WINDLOAD RESISTANCE	WATERTIGHTNESS
GT window	$U_f$ from 0,73 W/m <sup>2</sup> K	Class 4; EN 12207	Class C4; EN 12210	Class E900; EN 12208
GT door	$U_f$ from 1,29 W/m <sup>2</sup> K	Class 4; EN 12207	Class C5; EN 12210	Class E1350; EN 12208

\* Thermal insulation is dependent on a combination of profiles and thickness of the filling.